



CorasWorks® Workplace Planning and Implementation Course

CORASWORKS

THE NEXT STEP IN THE EVOLUTION OF COLLABORATION

About CorasWorks Workplace Planning and Implementation

This one-day, intensive training course will prepare CorasWorks workplace Designers and Administrators to make the most of their collaborative solutions built on Microsoft® SharePoint® and the CorasWorks Workplace Suite. Students will learn a variety of strategies and techniques to architect, customize, and implement their collaborative environment.

By the end of this course, students will be able to:

- Model a workplace architecture based on a real world scenario and organizational needs.
- Architect a workplace to logically model organizational hierarchy & business processes.
- Design a workplace architecture that provides an infrastructure and accounts for flexibility, scalability, reusability, maintainability, & extensibility in solution design.
- Maximize component functionality of the CorasWorks Workplace Suite and new CorasWorks technology offerings to build powerful enterprise business applications.
- Best utilize all components of the CorasWorks 4-Tier Application Architecture.

Who Should Attend?

This course is designed for individuals responsible for the implementation, customization, administration, and support of the CorasWorks Workplace Suite. In preparation for this course, students will benefit by knowing the following:

- Builder Concepts – Aggregation (roll-ups), Navigation, Active Displays, Dashboards & Personas
- Concepts of the Integrated Workplace and Interconnected Business Applications
- Design Freedoms and Constraints
- Basic CorasWorks Design Patterns

Prerequisite

As a prerequisite for the training, all participants must have attended the CorasWorks Workplace Suite v10 Essentials Course.

Course Outline:

Overview

The Workplace Planning and Implementation course builds upon the core capabilities and concepts learned in CorasWorks Workplace Essentials, extending the foundation within the context of the 5 Phases to Productivity: Requirements, Planning, Execution, Implementation, and Maintenance. The goal of the course is to enable students to design better, build faster, and manage easier to achieve productivity gains more rapidly within their respective organizations.

The following topics will be covered in this course:

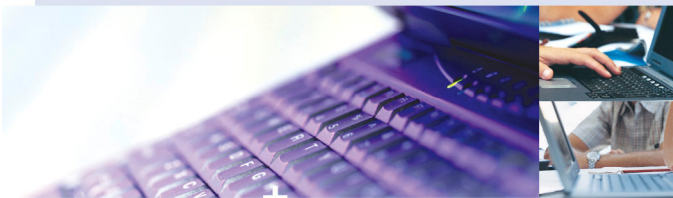
- Identifying business requirements;
- Extracting the Who-What-Where of your requirements;
- Translating business processes into the “language” of SharePoint and CorasWorks;
- Understanding the format and structure of diagrams for planning purposes;
- Formulating the location and contingencies of building new applications;
- Building a functioning application based on requirements gathering and planning;



12007 Sunrise Valley Drive
Reston, VA 20191

P 866.580.3115
F 703.935.3217

E info@corasworks.net
www.corasworks.net



CORASWORKS

THE NEXT STEP IN THE EVOLUTION OF COLLABORATION

- Accounting for needs in rolling out implementations;
- Empowering better governance for SharePoint-based solutions using CorasWorks.

On completion of this course you will be able to:

- Document requirements for your CorasWorks solutions;
- Understand which and how CorasWorks capabilities satisfy business needs;
- Respond to user questions or needs in regards to available functionality;
- Develop a build plan and capture it for reference in the build phase;
- Implement and act upon the plan, referencing requirements, to satisfy the business needs;
- Strategize around handing off applications to the business owners;
- Craft rules and policies around managing and adopting the applications.

Requirements Module

The first series of lessons begins by addressing the first phase in the process for building collaborative applications or solutions – defining and capturing requirements. Within the training environment students use a CorasWorks Actions Form to define an identified requirement(s) that they have addressed, or would like to address using CorasWorks and SharePoint. As a class, select requirements are reviewed and discussed. Students are then divided into teams where one student plays to role of the end user, the other the builder. They select a predefined requirement and work though the need based on what they learned during the essentials class which the facilitation of a worksheet.

The goal of the requirements exercises is to have students start to apply what they have learned about the capabilities and possibilities of CorasWorks within the context of a real-world scenario and engaging with end users in the requirements phase.

Planning Module

During the planning module students focus on the logical and physical architecture within which the applications reside. The goal is to properly identify where and how they will be building the solutions based on architectural considerations. Key topics include the 10 CorasWorks Design Patterns and mapping solutions to the logical and physical architecture.

Execution Module

Once needs are identified, requirements are gathered, and planning is complete, students begin the work of executing against those steps. Using the work completed in the first two modules students build displays within the training environment. The goal of this module is to configure CorasWorks displays based on requirements gathering and planning without the guidance of a step-by-step exercise as experienced during the Essentials course.

Implementation & Management Module

The implementation and management module includes a closed loop approach to an application management lifecycle and governance model. Students learn how the capabilities such a CorasWorks Central Configuration and Actions can be applied to better implement and manage an application lifecycle and apply governance.

Capstone Exercise

A capstone exercise is completed by assigned teams using the key principles and capabilities learned throughout the Planning and Implementation and Essentials Courses. The exercise uses a real-world scenario for Employee On-Board Tracking. The instructions provide the details captured during the Requirements phase, and some of what would be included in a Planning Phase. Teams complete activities associated with the Planning, Execution, Implementation phases to complete the exercise. The goal of the Capstone Exercise is to bring the learning “Full Circle.”



12007 Sunrise Valley Drive

P 866.580.3115

E info@corasworks.net

Reston, VA 20191

F 703.935.3217

www.corasworks.net



CORASWORKS

THE NEXT STEP IN THE EVOLUTION OF COLLABORATION

Student Self-Assessment and Student Feedback

Each student will be required to complete a short self assessment at the conclusion of the training. The assessment and review is designed to help students identify any knowledge gaps and reinforce core topics and concepts reviewed during training. In addition, a Student Feedback mechanism is included within the training environment to enhance communication with the instructor regarding questions or general feedback on the course. At the conclusion of the training each student will complete an electronic course evaluation.

Registration Information

Course fee: \$950 per student (**Note:** Customers who purchased the CorasWorks Premium Annual Support and Maintenance plan receive a 20% discount.)

Fee includes: Student kit - Comprised of an in-depth training manual. **Meals** - Breakfast, lunch and snacks will be provided.

For more information on future dates and locations, please contact us at 1-866-580-3115 or via email at info@corasworks.net.